



## Newsletter January, 2013

**Chattahoochee/Nantahala Chapter 692**  
**Trout Unlimited**  
**[www.ngatu692.com](http://www.ngatu692.com)**

**President:** Joe Duket  
**Secretary:** Alan Sirmans  
**Webmaster:** Larry Bundy

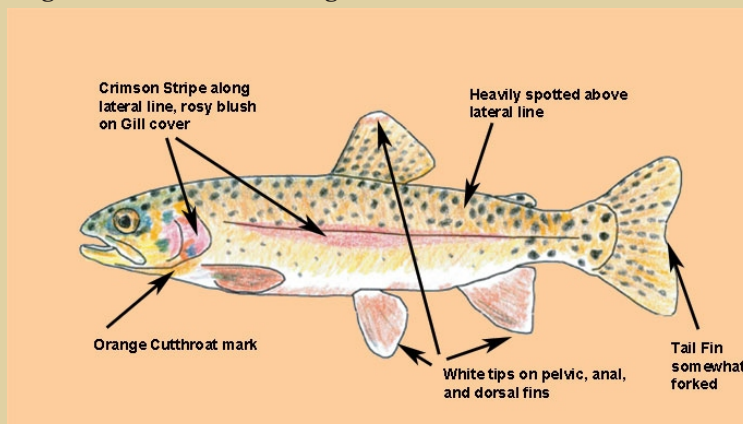
**Vice President:** Pat Bradley  
**Treasurer:** Frank Glowaski

***The next meeting will be:***

***Thursday, March 14th***  
***Cadence Bank, Blairsville, GA***

The fly tying session begins at 5:00 pm and the business meeting starts at 7:00 pm.

**February's Meeting:** The program was presented by Bob Borgwat, owner of Reel Angling Adventures and member of the Blue Ridge TU Chapter. Bob presented a program on fly fishing opportunities on the McCloud River and other coldwater fisheries in northern California. The McCloud Rainbows have been touted for many years as the primary rainbow that was distributed to hatcheries and fisheries throughout the United States and other countries. The McCloud Rainbow is also referred to as the Shasta Rainbow. According to Robert Behnke, professor emeritus of Fisheries at Colorado State University, the brood stock that was procured by the U.S. Fish Commission in 1880 were primarily Coastal Rainbows (Steelhead) that inhabited the McCloud River with some McCloud River Redbands mixed-in. The resulting eggs that were shipped from this brood stock for the next fifty years were mostly of Coastal Rainbow genes with some McCloud Redband genes mixed-in. Behnke also points out that not all Coastal Rainbows will return to the ocean but some will remain within its resident stream, as may have been the case with the McCloud strain. One of the major attributes of the "McCloud Rainbows" was the ability to remain within the waters that they were introduced. This can be also explained by the fact that steelhead strains also tend to remain within the resident streams when they are introduced into areas outside their native waters. It has been evident that the McCloud Rainbows have been a successful introduction of rainbows throughout the world. However, much of this success can be attributable to the Coastal Rainbow (Steelhead) that were developed within the McCloud drainage. It is difficult to say how those attributes have changed over time with continued introduction of hatchery trout and the loss of genetic diversification by the damming of the McCloud drainage with the Shasta Dam.





**We received an e-mail from TU and L.L. Bean recently announcing its 2013 gear give-away program. We submitted a request for equipment to help us in our various kids and veterans programs and I am pleased to report that we now have 4 new rod and reel combinations to add to our inventory!**

**Here is the notice from L.L. Bean:**

"Thank you for participating in the 2013 L.L.Bean and Trout Unlimited gear give-away program. For decades, L.L.Bean has offered unwavering support to TU's efforts. By engaging members, and especially more young people, in coldwater conservation and fishing, L.L.Bean and TU are committed to ensuring the protection of North America's trout and salmon fisheries and their watersheds for generations to come. This year, a record number of chapters participated in the program. Even still, we are able to offer your chapter two Angler II - 8'6" 6 wt outfits and two Angler II - 8' 6wt outfits. You should be receiving the shipment direct from L.L.Bean in a matter of days. All equipment is covered by L.L.Bean's legendary satisfaction guarantee: returns/defect should be handled through L.L.Bean. Equipment is not refundable for cash returns.

We thank L.L.Bean for their unwavering support to TU, and we hope you do too."



**March Program:**

Mickey Cummings, County Extension Coordinator for Union County (part of UGA's College of Agricultural and Environmental Sciences Cooperative Extension), will present the program. In addition to speaking about his job and the valuable service he provides county residents, Mickey will present his idea for a youth fishing day in Union County.

Please plan to attend as there will be both an interesting program and important business issues to discuss afterwards.

## Chapter Work Projects in 2013:

*We have started recruiting volunteers to help at our various projects. Thanks to those members shown below who volunteered at our last meeting. As you can see, we still need more volunteers, so check your calendars and sign up to help. We can't perform our duties for which we're committed without strong support from the chapter! We are 125 members strong, but only 7 have volunteered to help to date.*

**4/20: River Project: Toccoa Sweep (9:00 - 1:00).** *Blue Ridge chapter is Lead.*  
*Volunteers: Frank Glowaski and Marcus Tuschel*

**4/20: Georgia Fly Fishing for Vets Day (8:00-3:00):** *Paces Mill Park, Atlanta*  
*Volunteers: Joe Duket*

**5/8: Hatchery Event: Special Kids Fishing Rodeo (9:00 - 12:00)**  
*Volunteers: Joe Duket, Ben Telenko, Marcus Tuschel, Sam Hogsed, Jody Williams, Jim Williams and Burl Conley*

**5/10: Hatchery Event: Veterans Appreciation Fishing Rodeo (9:00 - 12:00)**  
*Blue Ridge chapter is Lead.*  
*Volunteers: Burl Conley, Marcus Tuschel and Harold Hogan*

**6/7: Hatchery Event: Seniors Fishing Rodeo (9:00 - 12:00)**  
*Volunteers: Ben Telenko, Marcus Tuschel, Burl Conley and Harold Hogan*

**6/8: Hatchery Event: Family Fishing Festival (9:00 - 12:00)**  
*Volunteers: Frank Glowaski, Marcus Tuschel, Ben Telenko and Harold Hogan*

**6/15: Stream Project - Pretty Branch (9:00 - 1:00).** *Blue Ridge chapter is Lead.*  
*Volunteers: Joe Duket*

**8/24: Stream Project - Boggs Creek (9:00 - 1:00).** *Tailwater chapter is Lead.*  
*Volunteers: Larry Culpepper and Joe Duket*



*Pat Bradley is still accepting applications for Trout Camp. We have 3 kids on our list now which will be reviewed by the board in the coming month. Our chapter can send two qualified individuals to the camp.*

*Trout Camp 2013 will run from June 9 - 14.*

*To submit an application, e-mail Pat at:*

*landpbradley@yahoo.com*